



SOUTH SKYLINE ASSOCIATION

www.southskyline.org

APRIL 2017

GENERAL MEETING

TOPIC: Mount Umunhum Summit Project

SPEAKER: Steve Abbors and Ana Ruiz of Midpeninsula Regional Open Space District

PLACE: Thomas Fogarty Winery, 19501 Skyline Blvd (2.7 miles north of Page Mill Rd.)

DATE: Friday, April 7, 2017



TIME:

Snacks & social time 7:00 -7:30,
presentation 7:30 – 9:00

Light hors d'oeuvres and soft
drinks will be provided.

Fogarty wines will be available. We
request a donation of \$7 per glass.

Mount Umunhum is a spectacular peak in the Santa Cruz mountain range with unique habitats, 360-degree views, an incredible cultural history, and will soon provide new opportunities for rich trail and nature experiences starting September 15. Midpeninsula Regional Open Space District (Midpen) has been actively working for nearly 8 years to restore the site's natural beauty and open the mountain top for public enjoyment. Midpen will share the work completed to date, describe the new public access facilities and amenities that are currently under construction, offer panoramic pictures of the breathtaking views, and speak to the unusual wildflowers, trees, birds, and butterflies that are especially adapted to high elevation climates. Midpen will also share the mountain's rich cultural stories, including its sacred significance to local Native Americans, its former military use as an active Cold War era Air Force Base, and its prior habitation by Franco-Prussian War refugees who cultivated the land for winemaking in the late 1800s and early 1900s.

Steve Abbors – General Manager

Steve is an East Bay native whose career has brought him across the bay to lead the Midpeninsula Regional Open Space District. Steve earned Bachelors and Masters degrees in biological sciences from California State University East Bay and has been the general manager of the Midpeninsula Regional Open Space District since April of 2008. Steve believes that Midpen's mission of preserving, protecting and enjoying our environment is essential work, which in the broadest sense, protects our region's "life support system". He strongly emphasizes collaboration with conservation and agency partners and meaningful involvement of Midpen's highly diverse public to advance that work over the long term. Away from work, Steve is an avid hiker with lifelong interests in natural history and ecology.

Ana Ruiz – Assistant General Manager, Planning and Project Delivery

Ana Ruiz is Assistant General Manager for the Midpen, a special district focused on the preservation of open space lands, restoration and protection of sensitive natural resources, and ecologically-sensitive public recreation and enjoyment. Ms. Ruiz has over 18 years of public sector experience in open space preservation, recreation, and natural resource stewardship. She holds a Bachelors degree from Stanford University in Geological and Environmental Sciences and a Masters in Urban and Regional Planning from San Jose State University.

S.O.S. - SAVE OUR SKYLINE!

Dick Schwind

LATE BREAKING: A Caltrans Community Meeting is being arranged for sometime in April. Watch the SSA website for date and time.

The heavy series of storms in January and early February have done more road damage than any old-timers can remember, possibly a hundred-year event for our roads. On the afternoon of February 10 the large highway



fill over a gully about 3/4 mile south of the Castle Rock State Park parking lot suddenly avalanched down the canyon. This opened a 200+ foot gap in Skyline Blvd, creating what many are calling 'Great Gap'.

The landslide was observed by the nearest resident and heard indoors for quite some distance. The word spread fast and many of us went to see this blowout, a spectacular site. Caltrans engineers were soon on site to start engineering a recovery. More perimeter earth with trees kept falling into the void for a week or two.

Our Skyline community has been split in two; those to the south rely on a damaged Black Road to get to the valley, and those to the north of the gap rely on Highway 9 (when it is open), Page Mill Road or roads to the north.

Throughout the years innumerable hillsides have slid onto public and private roads, been cleaned up multiple times, and forgotten. On many Santa Cruz Mountain roads there are places that have lost the use of the outside lane due to the highway fill under the pavement sluffing away, undercutting the road. Possibly most notably is Highway 84 not far east of Skylonda. A smaller example is just south of the collapsed Skyline Blvd (the 'Great Gap'), not far north of Las Cumbres. Local resident, Fred Glover, has led the way to keep the drainage open there despite a sluffing uphill bank. This area is now another one-way traffic site.

Any more rain will produce more sluffing at these sites and could lead to a total traffic stoppage. Residents worried about becoming trapped between two blockages have often spotted a vehicle to a safe location.

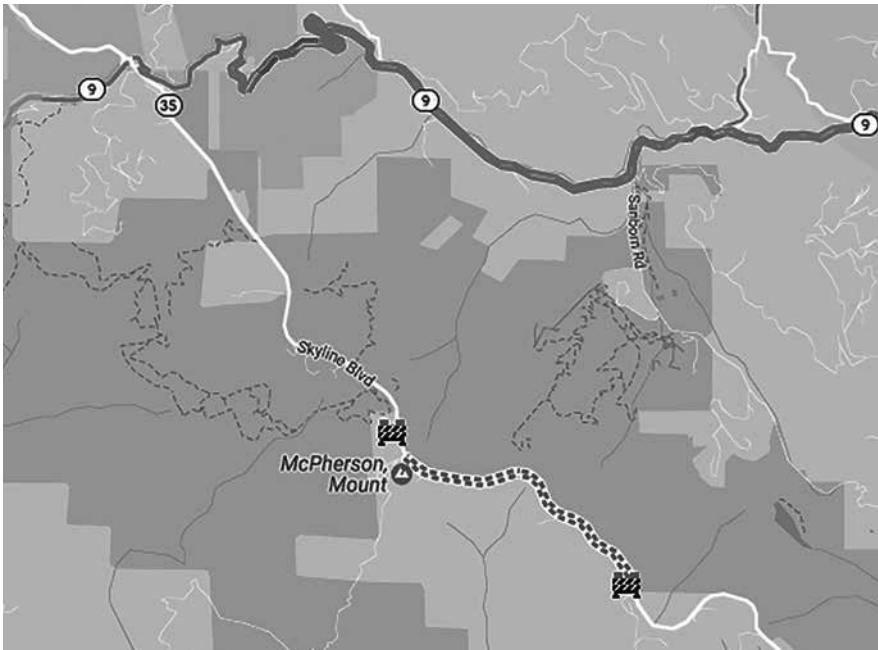
We have learned that water ponded on the uphill side of the fill at the 'Great Gap'. This indicated the culvert pipe at the bottom of the fill had failed and the ponded water had saturated the fill causing the failure. It is also possible a spring could have developed under the road bed.

This is one side of Skyline

This is the other side of Skyline



Looking down the 'Great Gap'



Quickmap as of 3/10/17

long time before the gap is rebuilt, one of the proposals we will discuss with Caltrans is to consider making a one lane temporary bypass road of this section. We also scouted a good replacement trail. Caltrans would need to negotiate a deal with Santa Clara County Parks and get the environmental permits if they wish to pursue this option. Possibly our community could help with the trail rerouting.

At the February 27 Roads Meeting at Lakeside School our road and culvert issues were presented directly to Caltrans design engineers that are already looking at the design options for the 'Great Gap'. They are seriously considering a permanent concrete bridge for the site, something that might be completed in a year. The next meeting in April may give us a better idea of what Caltrans plans to do.

Editor's Note: Updated information on some road closures is available at <http://quickmap.dot.ca.gov/> Video of the collapse at www.youtube.com/watch?v=jhLYaCOiK1M



One of the slides on Hwy 9

LOS GATOS POST OFFICE DELIVERY

With the closure of Skyline Blvd south of Highway 9 many residents have experienced a delay in their postal service. SSA contacted the Los Gatos Postmaster, John Lopez, for clarification on delivery. When Highway 9 is closed they are unable to deliver to residents north of the collapsed portion of Skyline. When Highway 9 is open, they will delivery every-other day.

“Our rural carriers have performed at the highest level during these past weeks to serve as many of their customers as is safely possible and are eager to extend full delivery at the earliest date.” - John Lopez

EMERGENCY COMMUNICATIONS NEWS

Lisa Short Chupity

As we have all experienced, this Winter has been an especially wet one, with road hazards, property damage, evacuations and entire neighborhoods cut from electricity, communication and travel. Twice, the La Honda District Operations Center at the La Honda firehouse was opened to manage emergency communications by Jeane Sommers, Emergency Coordinator for the La Honda-Loma Mar area. The operations center was used by CERT, also, managed by Peggy Wargo. The center was opened January 7, for 24 hours, and February 9, from 0800 to 1600 hours. Emergency communications were also set up at Pescadero High School both days.

During the January 7 storm, the entire Middleton Tract was cut off by a fallen tree and mudslides. ARES (Amateur Radio Emergency Services) Emergency Operations Coordinator Linda Bennett, along with assistant EOC Peter Chupity, and Fire Chief Ari Delay hiked into the Middleton Tract in the stormy darkness with an emergency radio and antenna so that any emergency calls could be made from one resident's house. A radio check made from that house reached the repeater on Mindego Hill without any interference. Luckily,

it never had to be used. Pat O' Coffey, Emergency Coordinator for the South Skyline area managed Amateur Radio communications, as well as taking radio traffic from GMRS radios in her immediate neighborhood, to field reports of fallen trees, mudslides, and other property damage.



*Emergency operations center at the La Honda Volunteer Fire Brigade
photo by Neil Panton*



SOUTH SKYLINE FIRE & RESCUE NEWS

Andy Seigel, Captain, SSF&R

It's been an eventful few months. Let me start by thanking the SSA for funding 75% of the cost to replace one of our aging vehicle extrication tools. These tools, like the "jaws of life", are used to remove a vehicle from around the occupants. Any day now we should have a new Amkus 22 cutter which is capable of cutting through the high-strength steels used in modern cars. Over the next several years we will be upgrading other components of the system.

Storms

Everyone has been impacted in some way by the recent storms. One of the most extreme events occurred on February 10, when approximately 200' of Skyline Blvd collapsed just south of Castle Rock. This bisects our response area, and presents some significant challenges. Las Cumbres Station is disconnected from our hub at Saratoga Summit station. Even the simplest things, like getting fuel, or getting team members from the north side over to the south side for training, have become complicated. In terms of response, once Highway 9 is open, the north side of the split is in good shape: neighboring fire districts north on 35, and both ways on 9 will assist Saratoga Summit as needed, along with any available north-end Company 29 volunteers.

The south side of the split, including Las Cumbres and points south, is more challenging. We have only five volunteers who live south of the break on Skyline. Additional response will come from Santa Clara County, and from Loma Prieta / Burrell in Santa Cruz County. We are working out the details of an operational plan with County Fire management. Updates will be posted on the "latest news" tab on our website.



Pancake Breakfast - Canceled

At this writing, and after much discussion, we decided to cancel this year's breakfast. If that changes, we'll post an update on our website. We don't have the resources to run it and remain available for south-end incidents.

Seeking New Volunteers

We are already looking far and wide for new volunteer firefighters for 2018. We sometimes have openings for medical-only positions. If you have ever thought of joining the fire department, now is the time! Your community needs you. <http://southskylinefire.org/join.php>

WHAT IS YOUR SSA BOARD DOING?

Michael Rowe, President SSA

In January the board completed our annual budget planning and increased the amount we are planning to give to local community organizations – details to be found in the Treasurer's Update column in this edition of *Skylines*. Also in January, we had a General Meeting at the Saratoga Summit CalFire station. The meeting was an interactive event where members shared fond memories and fun stories of living in our mountain paradise. We also discussed ideas on what the SSA can do to better help the community. Interestingly, most of the feedback I heard was congruent with what the SSA Board has been focused on:

- Working with authorities to reduce reckless driving and road-racing;
- Raising awareness and concerns about shortage of Park Rangers;
- Collaborating with authorities to deal with illegal cannabis grows;
- Reducing roadside trash/litter.

Additionally, it was suggested that the SSA try to influence providers to improve local broadband and cellular network services.

With the recent storm damage to our roads and infrastructure, a whole new set of priorities has been created for the board. To this end, many SSA board members attended a community meeting at Lakeside School, where we met with representatives from District Supervisors Wasserman and MacPherson, CalTrans, and PG&E. The meeting was well attended by about 200+ local residents. It was apparent that the CalTrans and District Supervisors' offices are well aware of the many road issues we face and are hard at work getting funding and resources to resolve the issues. Unfortunately, there are so many serious road issues that it will cost millions of dollars and months or years to repair. The SSA is working with State Parks and CalTrans to come up with intermediate solutions that can help reduce the pain these road closures are causing. Dick Schwind, Eric Issacson, Fred Glover, and others have been instrumental in leading the charge, and our community is grateful to them for their tireless efforts.

SSA BUDGET 2017

Kristen Anderson, SSA Treasurer

The SSA Board met in January to approve our 2017 budget. Our membership base has increased to more than 1,500 households, giving us more funds to work with. We decided that the best use for the extra income was 1) development of our online membership renewal process and 2) investment in our community.

The response to the online membership option has been tremendous. We still have further enhancements and have budgeted for those accordingly. To equalize the opportunity to receive community support, we developed a grant application process that took place between October and December. Applications were reviewed and voted on at the January meeting. We approved a total of \$20,000 in donations, or 2/3 of our budget. We also have budgeted for continuing our quarterly general meetings and the *Skylines* Newsletter. This year we budgeted for an \$8,325 loss, spending down some of our reserves.

Here is a detailed account of the budget:

CREDITS	DEBITS	
Number of members 1500	Newsletters – Printing \$ 4,250	SS FireSafe Council \$ 5,000
Membership 2017 \$30,000	Postage (<i>Skylines</i> , etc.)... \$ 1,750	Lakeside School..... \$ 5,000
Donations to SSA..... \$ 100	General meetings \$ 3,000	(pending approval of Measure A)
Interest \$ 25	Honorariums..... \$ 1,000	Other donations \$ 5,000
Total credits..... \$30,125	Website Development \$ 5,560	Reimbursements..... \$ 750
	Website Maintenance..... \$ 1,440	Insurance..... \$ 700
	SS Fire & Rescue..... \$ 5,000	Total debits..... \$38,450
		Net gain/loss in period. .-\$ 8,325

MEMBERSHIP REPORT - WE'RE OVER 1,800 STRONG!

Debra Born

Last October I reported a membership count of approximately 1,550 members (we get new members nearly every day). Thanks to our popular SPUG program our membership count as of March 1 is 1,800! This growth allows us to grant money to more organizations which contribute to the quality and safety of our life here in the mountains. So thank you to all who support our organization.

As highlighted in our January *Skylines* issue our online payment system on our website is up and running. Usage by our members vastly exceeded our expectations and dramatically reduced volunteer time to manually handle renewals and registrations as done in the past. A huge thank you to all who took advantage of our new online payment system! We appreciate the difficulties some had using the online system. We shall continue to look for ways to make it more clear and user friendly. Nonetheless, we are very happy with the results of our first year and your willingness to use our new system.

For those of you who have yet to renew for 2017 please check out our online payment system before you send in your check. But if you must, we're still accepting those!

Finally, many of you will see since paying online in January we have added an online feature that allows you to donate directly to our SSA supported organizations. (South Skyline Fire Safe Council, South Skyline Emergency Preparedness Org., South Skyline Fire & Rescue, and Mountain Neighbors Helping Neighbors). Please take advantage of that feature anytime you feel so inclined to donate to those important organizations.

Hopefully our organization makes your life in the mountains more pleasant and safe and your propane bill less expensive. If there's more you'd like to see us do, please send us your suggestions.

ANNOUNCING SSA'S COMMUNITY OUTREACH

John Harriman

An important component of the South Skyline Association's vision is to improve community safety, increase environmental awareness, and promote a thriving, personally-connected community in the Santa Cruz Mountains along the Skyline Blvd corridor. To help with the realization of that vision, the SSA Community Outreach Contact is assigned to work with various mountain entities to help bring their concerns to the attention of appropriate persons or agencies.

Our community resides in the corner of three separate counties, Santa Cruz, Santa Clara and San Mateo. Without a local advocate like SSA to voice the concerns of local residents, we may be overlooked by the governing bodies of the three counties.

As your Community Outreach Contact I am actively soliciting feedback from local private businesses, not-for-profit groups, and public entities operating in these mountains, as well as from individual households.

I'm proactively introducing myself and reaching out to entities in our area. If you have issues or concerns that need "amplification" in order to be heard by the appropriate bodies, please contact me, John Harriman, at 408-332-4780 or john_harriman@hotmail.com. I welcome the opportunity to speak with you to better understand your needs and bring a voice to your concerns. In addition to **INDIVIDUAL HOUSEHOLDS**, we encourage all of our community's groups and organizations to work with us, and will strive to get input from the following entities: **PRIVATE BUSINESSES:** Alice's Restaurant, The Mountain Terrace, The Skyline Trading Post, various mountain vineries like Thomas Fogarty, Rhys, Black Ridge and Clos del la Tech, the Jikoji Zen Center, Langley Hill Quarry, The Mountain House Restaurant, Skyline Chestnuts, and the many Christmas Tree Farms and honey vendors; **PUBLIC ENTITIES:** South Skyline Fire & Rescue, POST, Sempervirens, Portola Redwoods & Castle Rock Foundation, Midpen Open Space District, Castle Rock State Park, Portola Redwoods State Park and Sanborn County Park, South Skyline Firesafe Council, and the Skyline Historical Society that published the excellent Book, "The South Skyline Story"; **MOUNTAIN RESIDENTIAL COMMUNITIES:** Las Cumbres Conservation Corporation, Oak Ridge, Skyline Ridge, Indian Rock Ranch Road Association, Kings Mountain Association, Cuesta La Honda Guild; **MOUNTAIN SCHOOLS:** Lakeside Elementary, La Honda-Pescadero District and Kings Mountain Elementary. Any questions, comments, offers of help: **john.**

harriman@cbnorcal.com

SPUG QUARTERLY REPORT

Ruth Waldhauer

Skyline Propane Users Group (SPUG) was formed to benefit SSA members. For information about joining, or for members wishing current information on the agreement, please contact Ruth Waldhauer at ruth.waldhauer3@gmail.com or 650-948-1466. Information is also available on our website: www.SouthSkyline.org/spug/.

SSA has agreements with Amerigas, Kamps Propane, Suburban Propane, and FerrelGas. The open market price is about \$5.00/gallon. Prices are subject to change as frequently as wholesale prices change. The prices SSA posts are for the first of the month. Our SPUG rate is based on a keep-full basis, not will-call service.

You are not required to pay sales tax on propane if you do not have natural gas available where you use propane. If you get your propane from Amerigas, you will need to submit a sales tax exemption form. Contact Amerigas for the form.

	Amerigas	Suburban San Jose	Suburban Scotts Valley	Kamps Propane	Ferrell gas
January 2016.....	1.79	3.96	2.39	1.99	1.73
February.....	1.79	3.44	2.399	1.99	1.65
March.....	1.79	3.44	2.399	1.99	1.415
April.....	1.73	3.44	2.199	1.69	1.355
May.....	1.730	3.44	2.199	1.69	1.305
June.....	1.730	3.44	2.199	1.72	1.405
July.....	1.76	3.44	2.199	1.82	1.465
August.....	1.79	3.549	2.199	1.69	1.465
September.....	1.79	4.549	2.199	1.69	1.405
October.....	1.79	3.61	2.199	1.69	1.475
November.....	2.04	3.81	2.39	1.99	1.795
December.....	2.17	3.99	2.49	2.10	1.785
January 2017.....	2.17	4.30	2.74	2.28	1.995
February.....	2.17	4.50	2.799	2.48	2.165
March.....	2.17	4.579	2.99	2.19	2.235



Don't Lose Your SPUG Discount for Propane

Members who have neglected to renew their SSA membership for 2017 will no longer qualify for the SPUG price. To renew, go to southskyline.org/membership/ and follow instructions to pay online or by check.

CURRENT SSA BOARD MEMBERS

- Dave Anderson..... Highway 9 - Santa Cruz County..... Website, Public Safety
- Kristen Anderson..... Highway 9 - Santa Cruz County..... Treasurer
- Patti Begley..... Highway 9 - Santa Cruz County..... Communications, Website Committee
- Barbara Bekins..... Highway 35 - Rocky Creek..... Public Safety/Water, Website Committee
- Debra Born..... Alpine Road..... Membership Chair, SSFC
- John Harriman..... Las Cumbres..... Secretary, Outreach
- Joshua Littlefield..... Highway 35 - Rocky Creek..... Vice-President
- Maura McNamara.... Waterman Gap..... Board Insurance
- Jerry Parsons..... Las Cumbres..... SSEPO
- Marianne Rose..... Highway 35 - Long Ridge..... Communications, Website Committee
- Michael Rowe..... Highway 9 - Santa Cruz County..... President
- Ruth Waldhauer..... Portola Heights..... Membership, Communications, SPUG, Website
- Position Open
- (Larry Watson, interim) Highway 9 - Santa Cruz County..... Website, Public Safety Committee

CLEAN ENERGY CHOICES

COMING TO SKYLINE RESIDENTS IN SAN MATEO COUNTY

ENROLLED THIS APRIL, SANTA CLARA COUNTY BY OCTOBER

Kirsten Andrews-Schwind

Growing up on Skyline as the daughter of Dick and Janet Schwind, I learned to love both nature and community involvement. Watching my parents and neighbors collaborate on the SSA gave me a front seat view on how small actions build a better community. Thank you again to all the seasoned Skyline residents who bought cookies and grapefruit from me as I practiced my own community skills as a teen!

Now I'm delighted to share with the Skyline community a small action to make a big difference for Earth Day. I'm currently working for Peninsula Clean Energy (PCE), San Mateo County's new community choice electricity provider. PCE's goal is to reduce greenhouse gas emissions and offer customer choice at competitive rates. PCE launched last year as a joint effort of San Mateo County and all its cities. Unincorporated County residents are represented on its board by Supervisors Dave Pine and Carol Groom.

Much like SPUG, Peninsula Clean Energy uses bulk purchasing power to negotiate low energy prices – but in this case, for clean renewable electricity. The model is called Community Choice Energy, and counties all over the Bay Area are implementing it to address climate change. Peninsula Clean Energy purchases greener electricity for its customers while PG&E continues to handle electricity delivery, maintenance of wires, and customer billing. PG&E's customer service line is still the number to call in an outage. PCE customers receive one consolidated bill from PG&E - see an example on the website www.peninsulacleanenergy.org under Rates.

Peninsula Clean Energy offers the new electricity choices for all San Mateo County residents and businesses:

1. The default option ECOplus offers electricity that is 50% renewable (compared to PG&E's 30% renewable) AND 5% savings on the electricity generation portion of the bill. All customers are automatically enrolled in this program. They can choose one of the two options below instead if they wish.
2. Customers can choose to opt-up to ECO100, which is 100% renewable electricity for a small premium of one cent per kilowatt hour. The additional cost is about \$2.50/month for the average resident. As my husband and I live in a shady location in Pacifica with low solar potential, we opted up as soon as we could last fall!
3. Or residents can choose to not participate in PCE and opt out of the program.

In March, Skyline residents in San Mateo County begin receiving four notices in the mail about these new choices. In April they will be automatically enrolled in ECOplus to enjoy 50% renewable energy and 5% savings. They can easily choose to opt up to 100% renewable energy, or opt out, by going to PCE's website www.peninsulacleanenergy.com or by calling PCE's customer service phone number at 1-866-966-0110.

In Portola Valley, the town council voted to automatically enroll all its residents in ECO100, possibly making it the first town in the United States to be powered by nearly 100% renewable energy! In Portola Valley, residents may also choose to opt down to ECOplus if they do not wish to pay the small premium for ECO100.

As many Skyline residents have solar panels, note that Peninsula Clean Energy pays its net metering customers one cent per kilowatt hour more for energy sold back to the grid. PCE net metering customers are enrolled just after their PG&E true-up date so they won't lose any credits. PCE net metering enrollment began last October 2016 and continues through August 2017, so some Skyline residents are probably already enrolled in PCE. All community choice customers continue to qualify for all PG&E energy efficiency programs and rebates. Also, residents who are currently enrolled in CARE or medical baseline energy discount programs automatically continue in these programs.

Santa Clara County residents will soon get their choices from Silicon Valley Clean Energy, launching this April. Silicon Valley Clean Energy also offers choices of 50% or 100% renewable energy, but in this case both options are 100% carbon free. Silicon Valley Clean Energy is conducting a limited enrollment of 20% of customers this April, and enrolling the remaining accounts by October 2017. You can also join and opt up early!

See <https://www.svcleanenergy.org> or call 1-844-474-7823 for details.

Santa Cruz County is currently considering joining Monterey Bay Community Power to launch a community choice energy program. See <http://montereybaycca.org> for updates on that process.



2017 SPRING FREE CHIPPING PROGRAM MAY 1, 2, 3

Monday, Tuesday, Wednesday

Applications must be submitted no later than Saturday, April 15
Application and policy rules are available on our website

Watch for application flyers in your mail box or go to our website to sign up
www.southskylinefiresafe.org or contact Ed Hayes
E-mail: adhayes@wildblue.net, phone: 408-872-1715

CHARCOAL ROAD FUEL BREAK PLANNED SKYLINE TO STEVENS CREEK

Dick Schwind

The South Skyline FireSafe Council (SSFSC) has nearly completed the planning with Santa Clara County Parks, MROSD, and Cal Fire Santa Clara Unit for a shaded fuel break east from Skyline Blvd down Charcoal Road and continuing out Table Mountain Road, then through the woods to Stevens Creek near the Grizzly Flat Trail. This is a distance of about 3 miles. Work on this project will probably extend over two years and is expected to start this spring.

Charcoal Road is at 1+ mile north of Saratoga Gap, just south of the roadside parking for the MROSD Hickory Oaks area. The road is gated off as it is all in parkland, both county and MROSD, to where it turns off toward Stevens Creek Canyon Road, a part not of interest to us. The road is all on a ridge line, an excellent location for a firebreak, by far the best location for stopping a fire on the west side of Stevens Creek Canyon. This plan is in the Santa Clara County 'Community Wildfire Protection Plan' so is eligible for various funding sources though none has yet been obtained.

We need your support for this project! Yes, a contribution to the SSFSC would be nice, but your time is equally important. We will be at times using Cal Fire Ben Lomond prison crew for the work so if you have taken the five-hour training class for the protocol working around these crew you are most needed. We hope to also use California Conservation Corp youth. Help with logistics is also needed. Contact me, Dick Schwind, schwindr@yahoo.com, 408-867-9422. There will be a qualifying training class this spring for working with the prison crew. Contact Ed Hayes at edhayes@wildblue.net

ADOPT-A-HIGHWAY

John Peters

On Monday, February 6th, volunteers Dan Stuhlmüller, Armen Leonian and Jerry Peters met at the Cloud's Rest Vista Point at 10 am to gather litter. It was raining while we worked but fortunately the amount of cans, bottles and plastic containers was smaller than usual. We managed to clean the area in about 45 minutes. Dan was an energetic first-time participant (even encouraging us come out in the rain). I can always count on Armen! We collected two large bags. I noticed that the area was less littered than a few days earlier when I had been there scouting the situation. Any help is appreciated.

South Skyline Association & Skyline Historical Society volunteers are responsible for gathering litter every two months. The sweep normally takes about an hour and a half. So far over 185 names are on the honor roll listing those who have participated. We love getting new recruits. Please volunteer once. You will find it both rewarding and fun. Especially, if you drive past the Cloud's Rest Vista Point frequently on Skyline and the blight bothers you, come on out and give us a hand. Jerry Peters is the Coordinator of the Adopt-A-Highway project. Contact Jerry if you wish to volunteer. JPontheridge@gmail.com



TRAILS, TAILS, & TROUBLES

Joshua Littlefield

Our dog was lost. We were on the trail, in the woods. We didn't know it at the time, but our dog had found our new home. Her name was Bindi. She was an adorable Black and Tan Dachshund. She was bold, adventurous, and sweet. She had simply gone for a walk to her new home, that she picked, unbeknown to us.

My wife and I were hiking along Coal Creek Preserve to explore some of the beautiful open space along our Peninsula. This was one of the trails that we found online that was dog friendly. The access, length and trail options were all appealing to us. <http://www.openspace.org/preserves/coal-creek> Coal Creek Preserve has many beautiful sights to see; magnificent oaks, giant madrones, sneaker bay views, a glimpse of downtown San Francisco and all kinds of possible wildlife; snakes, squirrels, skunks, raccoons, bobcats, mountain lions, deer, ravens, hawks, woodpeckers and many more!

We were there for a family hike. My wife and our two Dachshunds; Allie and Bindi. Bindi was doing great hiking along the trails with us, but was easily distracted with many things. She would quickly run off trail, under a bush, around a tree. She was having a great time. *Then she was gone.*

We called her name. We looked for her. We went back and forth on the trails. We were worried. We kept searching for what felt like hours. The reality is it was probably less than thirty minutes before she came walking back up to us like nothing had happened. We were so relieved. We had our Bindi back. She was safe. She was happy. We were happy. What she had done was scouted our new home. We made this hike in the spring, and moved to our new home that year in the fall. On our first hike back out in the Coal Creek Preserve we realized that the very spot she had gone missing was our new back yard.

This was a powerful experience we will never forget. We had Bindi with us for over four more years before she went quietly and suddenly onto her final resting place late last fall, but not without finding something for us again. The summer that year prior, my wife and I took our first cruise to Alaska. On this incredible cruise, I bought a beautiful Tanzanite ring for my wife. Once we returned home the ring was lost. But, this last fall when Bindi left us she gave us something that will last forever; she gave us that ring back. We found it looking for her.

I will always remember the trails, tails and troubles, but what I'm left with is love. Love the trails. Love the tails. Love the troubles, because out of troubles comes new beginnings.

2017 SUDDEN OAK DEATH BLITZ

Volunteers needed for just 3-4 hours!

When: Saturday April 15, 1:30 pm

What: Training meeting for your local SOD blitz led by UC Berkeley's Forest Pathology lab researchers.

Where: Saratoga Summit CalFire Station, at 12900 Skyline Blvd, Los Gatos, just north of Skyline-Highway 9 intersection.

Details: Meeting 1-hour, free, snacks! You collect samples anytime the rest of that weekend on your land or with permission. Then, bring sample packets back to the Fire Station by 9 AM Monday April 17th. All sampling materials are provided. If possible, install the App "SODmap mobile" (free) before the meeting. Attending the training meeting is necessary in order to ensure all blitzers in California follow the same procedures. All samples are DNA-tested. Collect however many samples as you have time—it all helps so much!

Why: Infections in 2016 were higher than prior years. Unfortunately, this year may be even worse. The more data we collect, the more accurate the prediction of risk to oaks. For instance, your participation helps UC Berkeley pinpoint when a major die-off may occur. This helps landowners like you to plan oak tree inoculations and other efforts to help YOUR oaks stay healthy. The results are also used by parks and other land managers for decision-making about OUR Santa Cruz Mountain oak forests. See www.sodblitz.org

Hope to see you April 15th! Contact: Jane Manning at skyline_sod@yahoo.com

PS: If you're too far due to the slide, then consider the Saratoga meeting on Saturday, April 15, 10 am, Montalvo Art Center, The Art Commons, 15400 Montalvo Rd., Saratoga. Contact: annnorthrup@sbcglobal.net

CHECKERBLOOM GRACES OUR WILD GARDENS

Sarah Schoen

In the spring from March to June, checkerbloom's resemblance to hollyhocks gives our grasslands a garden-like quality. The perennial plants, growing up from well-developed rhizomes, can be found in the same locations from year to year.

The plants grow 1/2 to 2 feet long, and are sometimes sprawling. Stems are hairy or not. The leaves grow alternately from the stem. At the base, they are round and scalloped. Going up the stem they may become more deeply lobed, even cleft or slashed. Flowers have 5 petals, pale pink to dark pink or deeply rose, often with pale or white prominent veins. Typically, the petals are 1/2 to 1 inches long and grow evenly spaced in clusters from a terminal raceme. Inside the petals, multiple stamens form a tube, surrounding the wispy styles. But in an effort to limit cross pollination, not all flowers have both sexes – some are only female. Checkerbloom (*Sidalcea malvaeflora*) is a member of the Mallow Family, *Malvaceae*. The scientific name emphasizes that; the genus name is a combination of two other genera in the Mallow Family, while the species name means mallow flower-like.

Other common names include hecker-mallow and wild hollyhock. Although classification to the subspecies level can be difficult, two have been reported in our area.



Sidalcea malvaeflora ssp. *malvaeflora* has hairy stems and leaves (both sides). The leaves are generally not more cleft going up the stem. *Sidalcea malvaeflora* ssp. *laciniata* has leaves that are sparsely hairy. And its leaves are deeply cleft toward upper stem.

Checkerbloom is a larval food plant for three butterflies. Checkered skipper caterpillars eat it along with other members of the Mallow Family. Painted lady and west coast lady caterpillars eat it along with a long list of other host plants.

Checkerbloom is found on the west coast of North America, from Washington State south into Baja California.

Photo by David Schoen taken at Russian Ridge.



LOCAL RECIPES FROM OUR NEIGHBORS

At the January SSA General Meeting we held a raffle for those who submitted recipes made from local ingredients. As promised, we are publishing the first of those recipes. More will follow in future issues. Feel free to submit your own recipes, we love to share. Send to Skylineseditor@yahoo.com.

For a honey sweet fresh fruit dish, try a recipe from Larry Watson's grandmother.

JESSIE MAE'S COBBLER

Ingredients

- 1/4 pound (stick) butter or better
- 1 cup whole wheat flour
- 1 1/2 teaspoon baking powder
- 3/4 cup milk
- 3 cups any fresh fruit, sliced, chunked,...
- 1/2 cup honey

Directions

Preheat deep baking dish in oven @350F. Combine first 4 ingredients and mix into a batter. Place butter into dish when up to temperature. When melted, pour freshly mixed batter onto butter. Do not stir. Pour fruit pieces with honey into center of batter without stirring. Bake 45 minutes.

MOUNTAIN RESIDENTS VOLUNTEER IN AREAS NEAR AND FAR...

LACE MUSEUM IN SUNNYVALE

Beth Miller & Kim Davis

A hidden gem lives near here, on a short side street off of El Camino in Sunnyvale. Too many people are saying, "I never knew it existed!" But more and more, it's becoming recognized for its mission:

To preserve lace and the art of lace making,

To exhibit lace and its historical use,

To offer instruction in all facets of lace making.

It is The Lace Museum & Guild, located at 552 South Murphy Avenue, TheLaceMuseum.org . This is one of only two lace museums in the country!

Incorporated in 1981, administered by a Board of Directors, the museum is staffed entirely by volunteers. A teaching museum with stunning exhibits that change approximately four times a year, it houses a breathtaking collection of vintage laces and lace styles from all over the globe. The majority of the collection was donated by families wanting to share their heirlooms either as a part of the museum collection, or as an addition to the museum gift shop, or for the semi-annual Vintage Lace Sale of vintage laces, linens, clothing and more. These sales are critical financial sources of income to keep the museum doors open. A 501 (c) 3, lace and monetary donations are tax deductible and always graciously accepted.

The Lace Museum holds its first sale in March. The second sale is in September:

March 30 5:30pm-8:30pm, pre-sale for Guild Members only

March 3 and, April 1 9:30am-4:00pm, Open to the Public

September 21 5:30pm-8:30pm, pre-sale for Guild Members only

September 22-23, 2017 9:30am-4:00pm Open to the Public

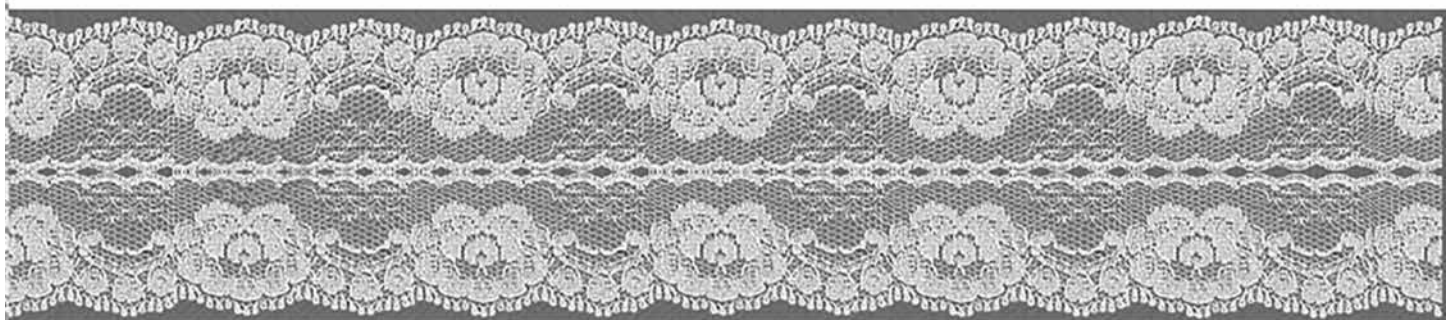
This is an opportunity to buy the most choice pieces, some possibly from the museum's collection. This often includes amazing vintage clothing that dates back to the 1800s, shoes and needlework purses! A collector, sewer or crafter's paradise.

Please plan a day Tuesday through Saturday, to come for a tour and see the items for the 2017 DOUBLE Raffle this year. Tickets can be purchased on site or by phone; and drop in for the sale! You'll see and touch pieces of lace only on those days, that you'd otherwise likely never have the opportunity to ever experience. Even take some home at prices, tax free, that you'll never find except at the museum sale!

For more information call The Lace Museum at 408 730-4695.

Come volunteer, even if it's just for a special event!

Skyline Resident Beth Miller is the retail manager for The Lace Museum



MOUNTAIN RESIDENTS VOLUNTEER IN AREAS NEAR AND FAR...

AMERICARE NEUROSURGERY INTERNATIONAL

Gary Heit

Americare Neurosurgery International (AMCANI) is a 501.c.3 NGO that has been working in Southeast Asia since 2005. Our model is to recycle used, but still viable medical equipment or new equipment, placing it in medically underserved communities in the developing world. As a member of the Skyline community since 2001, I am reaching out through the newsletter to let you know of our work.

Although we began with a mission of providing used equipment, we've learned that equipment is only half the story, and that we also needed to train local health care providers in the use of this equipment and Western medical culture where appropriate. Since 2005, we've been refining this model while building a micro-neurosurgical unit at the Department of Neurosurgery, Hue University of Medicine and Pharmacy in Hue, Vietnam.



Township level hospital main OR.



This is the main line of healthcare for the local populace. There is no anesthesia, and all cases are done (including abdominal surgery) with spinal blocks and IV sedation. Note this is a newer installation.



The pressure cooker they use to sterilize surgical instruments. It is done outside on a make shift kerosene stove.

The institute is the only teaching center for central Vietnam and provides care for the uninsured of the region's approximately 20 million people. We have instituted modern western medical concepts like tracking morbidity and mortality events, as a means of performance improvement.

We are now expanding our focus to neighboring Myanmar, to improve general medical care, through a partnership with The Ministry of Public Health, in the northwest Rahkine State. There are five regional hospitals in Rahkine State of which two have undergone modernization, but the remaining three lack infrastructure and are generally providing care far below their mission statement. Township hospitals provide basic surgical, OBGYN and medical care. These frontline centers are sadly lacking in the most basic facilities (photos above) severely impacting the ability of the local health care providers to deliver care. We have organized a five-year program to rebuild the entire system and provide follow-up training. We are starting with supplying basic microscopy labs to aid in the diagnosis of severe infections; the principle cause of death there.

Local Volunteers:

The Skyline community has been heavily involved in this project early on. The NGO Founder, current CEO and Medical Director, Gary Heit Ph.D.M.D. has been living on the ridge since 2001. Several households have donated both time and money. In particular, (in no order) the Torjusen's have been instrumental in getting several shipments crated and sent off to Vietnam and Myanmar. They went on the last mission to Vietnam and Myanmar to pilot a program in donor tourism! The Martella's of wine fame have also financially supported the program and Michael drives a mean fork lift while Beverly can swing a hammer. Brian Becky has also helped with biomedical engineer needs and shipping. Ruth and Anne Waldhuer have financially and strategically supported the NGO as has Cliff Jenkins... The list goes on. It is a testimony to our community that people with problems of their own care enough about those far less fortunate half way across the globe; who by a quirk of fate, have poor to nonexistent access to health care.

We are looking for volunteers, material and financial support to continue our missions in Vietnam and Myanmar. Our annual program needs are \$750,000 to \$1 million (currently unmet), and each trip to the region costs \$50-70,000 to fully fund, including the expenses of the doctors and nurses on our medical team; though currently all volunteer their time and travel expenses! We are grateful that several Skyline households have donated both time and money to this effort and hope you find it worthwhile. To learn more about our work please visit <http://www.amcani.org/>.

MIDPEN ANNUAL UPDATE

We would like to share Midpeninsula Regional Open Space District's annual update for 2015-16 fiscal year. We are very proud of another successful year protecting our local environment, making solid progress on public access and critical habitat restoration projects funded by voter-approved Measure AA and providing a wide-range of programs and services to the many communities we serve.

You can view the report online at <http://www.openspace.org/about-us/strategic-plan>.

During this past year, we made innovative organizational changes that focused on increasing our effectiveness as a regional open space agency and our responsiveness to the public. Those changes are already bearing fruit as we have accelerated the delivery of major projects which include the opening of three closed areas over the next two years: the summit of Mount Umunhum and Lower La Honda Creek in 2017 and western Bear Creek Redwoods in late 2018.

On behalf of our Board of Directors and staff, we are grateful for your support and your trust in us and we look forward to working with you in the coming years to fulfill the regional vision we share.

MIDPEN LAUNCHES 2017 PHOTO CONTEST

Contest uses photography to engage the public with nature

The Midpeninsula Regional Open Space District (Midpen) invites amateur and professional photographers alike to enter its eighth annual digital photo contest. The contest gives participants an opportunity to explore the outdoors while capturing the natural beauty of Midpen's open spaces.

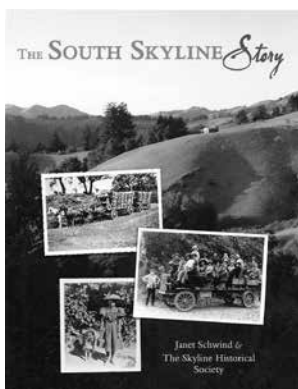
Eligible contestants can visit openspace.org/contest to submit photographs in one or all of four categories: Wildlife, Plant life, Landscapes, and People in Nature. There is no entry fee and limited to three submissions per entrant, per category. Previous winners and staff are not eligible to enter. Entries must be in digital format and must be submitted electronically. The contest ends Wednesday, May 31, at 12 p.m. PST.

Contest details

The contest will accept photo submissions from March 1 to May 31, 2017. All photos must be taken in a Midpen preserve that is open to the public. Finalists' photos from previous years, as well as full details about the contest can be found at www.openspace.org/contest.

Prizes

One first-place winner will be chosen from each category will receive a \$100 REI gift card, a Midpen gift bag, and featured in the Open Space Views Fall Newsletter. The overall Grand-Prize winner from the four category winners, will also win a ride-along with a Ranger for a behind-the-scenes look at the preserves!



THE SOUTH SKYLINE STORY

A fascinating biography of our scenic Skyline region

Upon opening the book you will follow the paths of the native Ohlone peoples; experience the rugged life in the logging camps, mills and ranches and learn how the crude trails, dusty ranch and private roads of the ridge properties through four different counties were connected by the building of Skyline Boulevard. The book introduces the various waves of people who left the comfort of the "flatlands" to succumb to the lore of the mountains. Complete with detailed maps, it should be in your library!

Your cost is just \$27.01. including tax or \$33.81 by priority mail.

For information email chuck_sch@hotmail.com or phone 408-867-9229

CLASSIFIED ADS

Free Fire Fitting for those in the South Skyline Fire & Rescue primary response area. This 2-1/2 inch fitting will allow the connection of a fire hose to your water supply and can be utilized by the fire department to access the water necessary for fire suppression. Please visit

<http://southskylinefire.org/> for more information under the "Help us help you" section.

Mountain Road Repair: Specialized in deep pilings/retaining walls. Please call Betty at 408-472-0380 or email

bookercreek@gmail.com

Wanted: Caretaker sought for Santa Cruz Mountains ranch property near Boulder Creek. Responsibilities: maintenance of structures, gravel roads, fences, gardens, equipment, brush/tree removal. Preferred skills: carpentry, gardening, mechanical, chainsaw operation. No smoking or drugs. Housing, salary and healthcare insurance package available. Please email David at df@frost.com.

Need Clean Fill? We have 100 tons!

Call Betty at 408-472-0380 or email at

bookercreek@gmail.com

Barbara and John Mountain Realtors

Residents here for 21 years. We LOVE the mountains...even with all the rain & road closures!
John 408-332-4780

Barbara 408-656-8209

With Coldwell Banker

You set the pace. We make it easy.

john.harriman@cbtnorcal.com

barbara.harriman@cbtnorcal.com

Check out our testimonials!

www.theharrimanteam.com

Learning Strategies

One-on-one tutoring in your home by qualified educators. K-12, all subject areas including test prep ISEE, HSPT, SSAT & SAT,

Contact Learning Strategies,

www.creative-learning-strategies.com

or email

victoriaskinner@creative-learning-strategies.com

or call 650-747-9651 for a free phone consultation.

Russian Ridge Winery

919 Washington Street, San Carlos.

Award winning wines, many Santa Cruz Mountains varietals. Tasting room opens Fridays 5-9 pm and Saturdays/Sundays 12-5 pm.

Dog Days Award Winning Dog Training

Classes Saturday days & Monday evenings in Portola Valley/Ladera. New! AKC Urban Canine Class Gift Certificates – great for any dog owner! Private Lessons available. Please call 650 851-5500 (best) or email: dog.days@comcast.net

Skyline Broadband Service

Offering high-speed wireless Internet with speeds up to 50 Mbps in much of our 500-square-mile coverage area.

<http://skylinebroadbandservice.com>

phone: 650-712-5900

Wanted: 4x8 utility trailer with 15 inch wheels, either a flat bed or box. Dick Schwind 408-867-9422

Residential Design: Country and urban custom houses, remodel and additions. 20+ years experience in California. See some of my work at:

www.tsvresidential.com - Taruno S. Vega

Phone 650-747-0654, email: taruno@coastside.net

Pineda Tree Service Inc. A local and reliable business that specializes in crown thinning & cleaning, hazardous tree removal, poison oak removal, and property cleanup, 24/7 emergency. Free estimate Insured and bonded. CSL#991767.

Phone: 650-208-2734

Email: pinedatreeserviceInc@gmail.com

Portola Valley Farmers' Market

Every Thursday, year-round 2-6pm (2-5pm winter) Weekly farmers' market brings local fruits & veggies, eggs, meat, fish, bakery & specialty foods, crafts and ready-to-eats. 765 Portola Road, PV at town center in front of the Historic Schoolhouse.

www.pvfarmersmarket.com

SC4 Amateur Radio Club Welcomes those interested in amateur radio for emergency communications and neighborly talk. License is free. Simple exam: No Morse code. We offer classes. Visit www.sc4arc.org or write: SC4ARC, PO Box 237, La Honda, CA 94020

Due to many requests, we will attempt to keep a list of ads that will run every issue. However, there is no guarantee that an ad won't be missed because of our changes in staff.

If you want be on the list, you must make a request to "run until canceled".

It is best to resubmit ads for each issue. Classified Ads are free to SSA members.

Membership is \$20 per year. Membership forms are available at www.southskyline.org

Please limit each ad to 45 words. Email ads to: skylineseditor@yahoo.com

SOUTH SKYLINE ASSOCIATION

Box 400, Star Route 2

La Honda, CA 94020

Consider Getting Your *Skylines* by Email

For those members who receive the *Skylines* through the Post Office please consider the option to receive it on-line. This will save paper as well as postage. Sign up for this option and verify your email address by sending an email to **Membership@southskyline.org**.

Those members who live locally where we stuff mail boxes will continue to get a paper copy.

SSA 2017 CALENDAR

General Meeting will be held on April 7 at 7pm at Saratoga Summit Fire Station

Board Meeting will be held on April 13

Board Meeting will be held on May 11

Board Meeting will be held on June 8

Board Meeting will be held on July 13

General Meeting will be held on August **5 or 6 (TBA)**

For locations and more information contact

Michael Rowe mrowe517@gmail.com • 408-872-1775

IN THIS ISSUE

General Meeting	1	SSA's Community Outreach	6	Sudden Oak Death Blitz	10
Save Our Skyline.....	2	SPUG Quarterly Report.....	7	Checkerbloom.....	11
Emergency Communication News	4	Current SSA Board Members	7	Local Recipes	11
South Skyline Fire & Rescue News.....	4	Clean Energy Choices.....	8	Mtn Residents Volunteer Near and Far	12
What is Your SSA Board Doing.....	5	Free Chipping Program	9	Midpen Annual Update	14
SSA Budget 2017	5	Charcoal Road Fuel Break Planned.....	9	Midpen Photo Contest.....	14
Membership Report.....	6	Adopt-A-Highway.....	9	Classified Ads	15
		Trails Tails, Troubles.....	10		

***Skylines* is published once a quarter: January/April/July/October**

Skylines invites individuals to submit articles and artwork.

Policy on Classified Ads: Ads are free to SSA members. They must be resubmitted for each issue unless a request is made for the ad to be "on-going". Please keep ads to 45 words or less.

***Skylines* Ads and News Articles:** The deadline for submitting ads and articles for the next issue is **June 15, 2017**.

Send all ads and articles to: SkylinesEditor@yahoo.com

We reserve the right to edit all submissions. We assume no responsibility for omissions, incorrect information or personal opinions.