



Water in Trees

A PRESENTATION BY
EVAN DELLOR,
RESEARCH SCIENTIST

The topic of this presentation will be 'Water in Trees'—how it moves, what it does, and why that matters. Trees, and plants in general move a large quantity of water from the soil to the atmosphere. Very little of this is actually used in any chemical process that benefits the trees. So, why does this happen? Doesn't it seem like a big waste? We'll touch on these and other interesting topics related to water in soil, in the trees themselves, and the atmosphere.

SSA Speaker Series— Live and Zoom

Friday, January 26, 2024

TIME 7:00 pm – Refreshments
7:30 pm – SSA Board Elections followed by the featured presentation and Q&A

PLACE Saratoga CDF Summit Fire Station
12900 Skyline Blvd.

DIRECTIONS Located on the west side of Skyline Blvd. approximately .6 of a mile north of the intersection of Skyline Blvd. and Highway 9.

Note: Parking at the fire station is limited, and overflow will have to park along Highway 9. Be safe, use a flashlight.)

PLEASE BRING A sweet or savory dessert to share.
SSA will provide beverages.

ALSO ON ZOOM To join click on the link:
<https://zoom.us/j/91310018757?pwd=REZoUDc1eU50ME9lNWhzNkg3ZjJaQT09>

(This link is also available on our website: southskyline.org)

Evan works as the senior research scientist at ePlant, a Los Altos based agro-technology startup. The company is primarily involved with developing wireless sensors that monitor the water status of trees. Applications include precision agriculture, urban and wildland forestry, construction site management, and tree research in general.



IN THIS ISSUE

SSA General Meeting	1
South Skyline Association News	2
SPUG Report.....	2
Fire and Rescue News	3
SSA Board Elections	3

SSA Grant Application	3
Page Mill Rd.Vegetation Projects	4
"The South Skyline Story"	4
SOD Blitz 2023	5
What Do You Mean, Fire Safe?	6

Fetid Adder's Tongue	8
Hiking in Monte Bello Preserve	9
Membership Application	10
Classified Ads	11

What the SSA Board is Doing...

BY PATTI BEGLEY AND JANET SCHWIND

Ami Jaqua, May 1934–November 30, 2023

The South Skyline Association Board is sad to announce the passing of Ami Jaqua. Ami and her family lived in these mountains for decades, and our South Skyline community greatly benefited from her contributions.

Ami was a true daughter of the mountains, having grown up in the Langley Hill area. She is remembered as a good mother, grandmother and friend, a gracious hostess, gardener, baker, hiker, and artist

Ami created the banner for the *Skylines*, and contributed many of her drawings that were used in our articles. The drawings below of her beautiful pond are two of our favorites. She will be remembered by SSA members as the hostess of many annual SSA summer meetings and potlucks on her lovely property. Look forward to more remembrances of Ami and her interesting family in future issues.



SPUG Quarterly Report

Month/Year	Amerigas	Ferrellgas	Kamps	Suburban/SV
November 2023	2.750	2.937	3.350	4.210
October 2023	2.750	2.900	3.350	3.840
September 2023	2.750	2.610	3.330	3.840
August 2023	2.750	2.487	3.240	3.840
July 2023	2.750	2.556	3.240	3.600
June 2023	2.750	2.951	3.650	3.600
May 2023	2.750	3.331	3.650	3.950
April 2023	2.750	3.335	3.650	4.350
March 2023	2.750	3.379	3.650	4.350
February 2023	2.750	3.405	3.650	4.400
January 2023	2.750	3.435	3.650	4.500
December 2022	2.750	3.146	3.240	4.150
November 2022	3.250	3.031	3.240	4.410

Skyline Propane Users Group (SPUG) was formed to benefit SSA members. For information about joining, or for members wishing current information on the agreement go to our website: www.SouthSkyline.org/spug/. If you have questions, please email propane@southskyline.org.

SSA has agreements with Amerigas, Ferrellgas, Kamps, and Suburban Propane Scotts Valley. The open market price is more than \$1.00/gallon higher than the SPUG price. **Please note: Prices are subject to change as frequently as wholesale prices change. The prices SSA posts are for the first of the month.** Our SPUG rate is based on a keep-full basis, not will-call service.

You are not required to pay sales tax on propane if you do not have natural gas available where you use propane. If you get your propane from Amerigas, you will need to submit a sales tax exemption form. Contact Amerigas for the form.

Membership dues are due every January. Those whose SSA membership has lapsed can be disqualified by our propane providers from receiving the benefit of the SPUG price. Membership can be renewed at <http://SouthSkyline.org/membership/>. If paying by check use the Membership Application on the website.

South Skyline Fire & Rescue News

BY ANDY SEIGEL, CAPTAIN, SSF&R

Year in Review

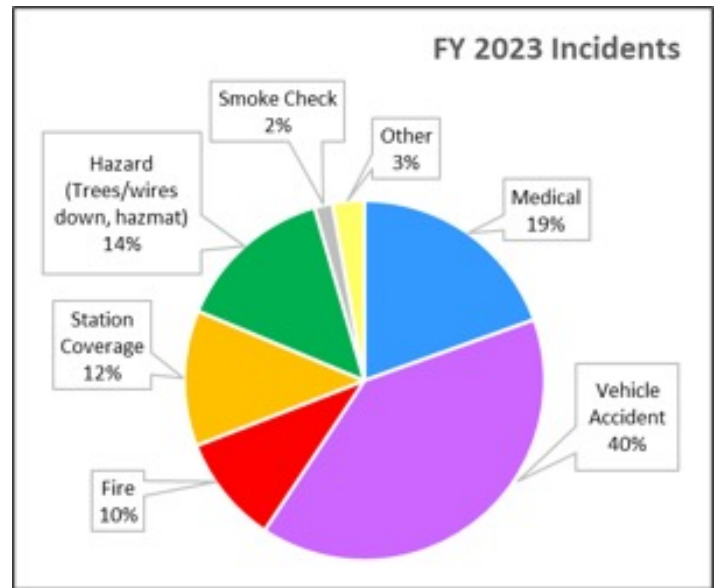
Happy New Year from SSF&R! We had record call volume in 2023 (246 calls), exceeding the previous high by more than 15%. Call distribution was atypical. Fire calls were down by 1/3, reflecting our locally quiet fire season. With our stormy winter, trees/wires calls were very high as expected—double last year's tally..

We had a good fundraising year which helped us set aside some funds for upcoming purchases. We are very thankful to the SSA membership for your support!

On the recruiting front, we added one firefighter, but attrition claimed two. We have one candidate in the 2024 fire academy, and we're hoping for more in 2025.

Fall was the season for prescribed fires. Six of our members participated in two Santa Cruz County burns and one in San Mateo (Pomponio Ranch, shown below).

Visit us at: <http://southskylinefire.org>



SSA Board Elections

At the January general meeting SSA members will vote for board candidates for the next two-year term. Board members who are on the slate for re-election are: Barbara Bekins, Rich Lee, Evan Dellor, Susan Stucky, and Udy Gold.

There are still openings for more board members. If you are interested in volunteering, please contact Evan Dellor at president@southskyline.org.

SSA Grant Application Deadline: March 31, 2024

BY SUSAN STUCKY

Will you need financial assistance for a program or project that supports the South Skyline community? Individuals, students, teachers, groups, and organizations are eligible for South Skyline Association grant funding up to \$10,000.

The 2023 fall deadline for submitting grant applications to the SSA is March 31, 2024. Please check the SSA website under 'Events' at <http://southskyline.org/events/> for the application template. If you have any questions or need additional information or assistance with the grant proposal application, please email grants@southskyline.org. Applications will be reviewed at the April 11, 2024 SSA Board meeting.

SSA January 2024 – Upper Page Mill Road Hazard Vegetation Projects

BY DEBRA BORN, SO. SKYLINE FIRESAFE COUNCIL BOARD MEMBER

Page Mill Road travels from Skyline Boulevard to Interstate 280 and Highway 101. When other roads to and from the coast side of the Santa Cruz mountains are blocked by accidents or weather-related issues, Page Mill Road is frequently the only alternative. It is also a potential fuel break in the event of wildfire except that the upper has not been properly maintained in many years. This summer there was a vehicle fire along this portion of the road which burned a small uphill area very near a home. Had the road been properly treated the vegetation would likely have not caught fire and burned the uphill trees.

The road runs through multiple jurisdictions which makes maintenance complex. Consequently, the Santa Clara County FireSafe Council and the South Skyline FireSafe Councils are partnering to reduce much of the heavy vegetation and improve both evacuation safety and visibility along the road's upper portion

which is so heavily laden with downfall from storms.

All project work is surveyed and regulated by environmental consultants and local agencies during planning and immediately prior to work to ensure sensitive habitat and species are protected. The goal for these projects is to ensure safe egress in the event of wildfire and access by emergency personnel on this critical escape route to keep residents, visitors, and structures safe in the event of a wildfire.

Starting February 2024, weather permitting, the Santa Clara County FireSafe Council will manage a weeklong 0.6 mile-long project to reduce excess vegetation. Project begins where the old Alpine Road intersects with Page Mill Road and extends to the intersection with Skyline Boulevard. Traffic control will limit traffic to one-way traffic for the safety of vehicles, bicycles, and workers. Dead and dying vegetation

will be removed at least 10 feet from the pavement edge, hazard trees up to 8" diameter be removed, and other trees limbed up 8-10 feet. Waste material will be chipped and scattered except that invasive vegetation will be cut and dumped off site.

In Fall 2024, again with weather permitting, the South Skyline FireSafe Council will manage a re-treatment project along this same upper road section. This project will extend slightly the area being treated in February by 0.15 mile to the east and is funded thru a 2023 CalFire Wildfire Prevention grant. Larger hazard and invasive trees as well as additional downfall from 2024 winter storms will be removed again with traffic control. The balance of this CalFire grant will go toward additional work on Portola State Park Road, which was treated this summer by the South Skyline FireSafe Council and funded by PG&E to remove primarily understory vegetation and dead trees.

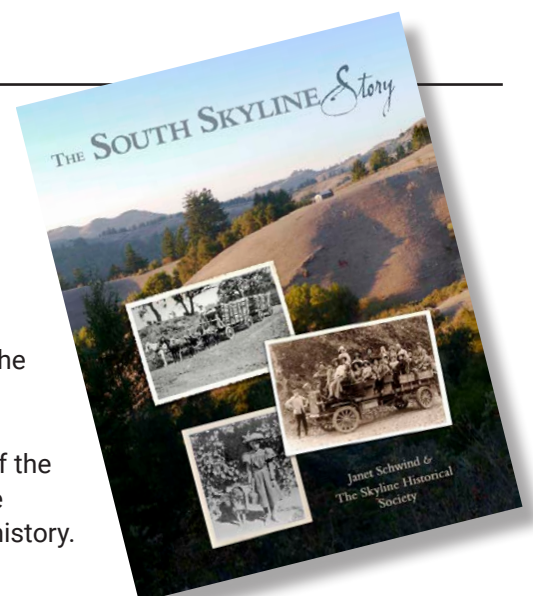
"The South Skyline Story"

A fascinating biography of our scenic Skyline region.

Need a gift for a special person on your gift list? We will help you with your shopping and send this very special gift directly to your lucky recipient and enclose a note that it is from you.

In this book the reader will follow the paths of the native Ohlone people and experience the rugged life in the logging camps, mills, and ranches. Learn how the crude trails, dusty ranch and private roads of the ridge properties through four different counties were connected by the building of the boulevard. This book introduces the waves of people who left the "flatlands" to succumb to the lore of the mountains of the area we call "home." Complete with detailed maps and vintage photographs, this book should be in the library of every person who loves local history.

Get your copy by contacting Skyline History President Chuck Schoppe, email: chuck_sch@hotmail.com or phone: 408-867-9229. Your cost: \$24.95 plus tax (\$2.25) plus \$8.55 shipping priority mail, for a total of \$35.75.



SOD Blitz 2023 Data Available Online

The Sudden Oak Death blitz* took place in spring 2023, as it has for 17 years across California, for the 12th time in the South Skyline region. The data is now available at: www.sodblitz.org (see “2023 Results and Map”). Three take-aways from Dr. Matteo Garbelotto’s 2023 Results presentation were: 1) “oak infection happens only in years with way above-average rainfall”; 2) oaks within 200 yards of bays MAY become infected (i.e., in a bad year) but oaks within 10 yards of the dripline of a bay WILL become infected; and 3) “treat oaks you care about with phosphonate before winter”, which prompts their immunity to deal with this unfamiliar pathogen.

Some maintenance reminders as well: Bays that have been cut love to re-sprout! These re-sprouts will become infectious again. If the trunk of the bay is pre-treated in fall with an herbicide, it is less likely to re-sprout. In fact, Matteo stated that re-sprouts and small bays are the most efficient SOD vectors because they stay wet and are close to oak trunks where the disease enters. Lastly, based on an extensive new study, using bay as mulch is unwise unless it has been composted at high temperature.

SOD blitzes reveal a large number of SOD outbreaks on the Santa Cruz Mountains, involving several parks and open space lands: Huddart, Teague Hill, El Corte de Madera, La Honda and La Honda Creek, Los Trancos, Monte Bello, Skyline Ridge, Long Ridge, Upper Stevens Creek, Saratoga Gap, Portola Redwoods, Las Cumbres.

The 2023 data again revealed Skyline as a hot spot. The disease increased here slightly versus 2022, which had a particularly low infection rate due to dry weather. This means prevalence of SOD—and likelihood of oak infection—is increasing compared to recent years. Matteo emphasized that even when rainfall and temperature do not favor bay-to-oak infection, bay-to-bay pathogen spread is still active. This drove home the case for immediate bay reduction, limbing, or removal near your oaks!

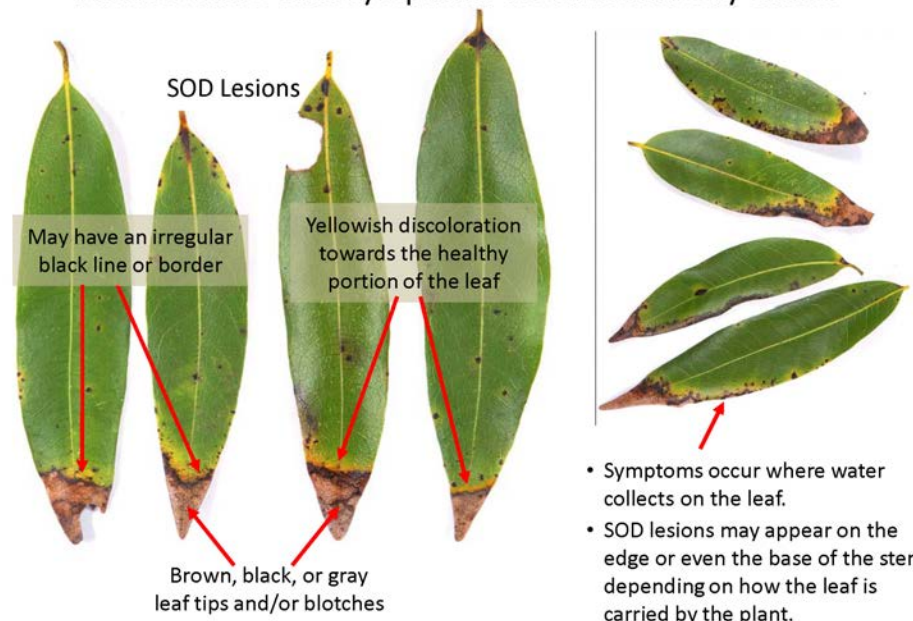
Finally, another 2023 finding was that as you descend off of Skyline Ridge towards SF Bay, infection rates decreased. The rain shadow reduced SOD compared with higher elevations. Likewise, it was pointed out that mountain canyons where humidity was higher continued to be more likely to test positive in 2023.

*The SOD blitz is a collective volunteer effort across California in which trained citizen scientists collect disease-infected bay laurel leaves for PCR analysis at UC Berkeley. Anyone can join! Check out www.sodblitz.org.



SOD Blitz 2023 Results PowerPoint

Sudden Oak Death Symptoms on California Bay Laurel



What Do You Mean, Fire Safe?

BY LARRY WATSON, BOARD MEMBER SSFSC



With regard to the word Fire, this article is about wildfire, not about smoking in bed.

Safe from wildfire is about you, your family, your home, your power and water, your neighborhood, your escape routes, and access for emergency vehicles should a wildfire occur that could affect you.

“Wildfire Safe” is a spectrum of concern. Being wildfire safe is likely not a concern if you live in a metal boat offshore. But we all live within or near habitats that can be described by a single word, flammable!

When I look down on the roof of our house and beyond on a beautiful December sunrise, at the center horizon I can see Ben Lomond Mountain. Just beyond my defensible space are Douglas firs, some approaching 200 feet in height. A 360-degree view would indicate combustible biomass in all directions for miles. I assume the probability that all of it will burn someday is 100%. And, when it does, my rooftop, decks, and defensible space will likely be showered with embers and firebrands.



What can I, or anyone, do until that someday happens? As the newest board member of the South Skyline Fire Safe Council, I would like to share what I’ve learned in my first year about the council and the programs they support to help you be safer from wildfire.

Fire Safe Council

There are over 100 Fire Safe Councils in California, and our community has its own. It is one of the smallest with no paid staff, and is a 501(c)(3) non-profit so donations to support its programs can be tax-deductible.

Councils are local, grassroots organizations supporting their communities. The first were started in the 1990’s. Since 2004 there has also been a California FireSafe Council in Sacramento which is principally a clearing house of funding for the local Councils. They and their partners (like PG&E) have provided almost \$250 million in funds to the local Councils.

Who’s At Our Council Meetings

Meetings are currently online monthly and anyone is welcome. Our Council participants include neighbors as Board Members, plus representatives from CalFire, Midpeninsula Regional Open Space District, and neighboring Fire Safe Councils. Unfortunately, State and County Parks do not participate currently, even though they are responsible for managing significant biomass within our area.

What Our Council Did for Our Community in 2023

The programs and projects are in three dimensions: you, your home, and your communities.

In general, our Council offers education to you and your neighbors about being more wildfire safe, helps you in making your home more defensible, and sponsors projects to improve escape routes and emergency vehicle access from/to your home or community.

For You

1. In association with the South Skyline Emergency Preparedness Organization, we hosted the Community Preparedness Day in May at Skyline Ridge Open Space Preserve. Don't miss next year's event.
2. Submit articles to Skylines with important information to support your safety.
3. Provide links to information on our website <https://www.southskylinefiresafe.org/>. Click the Facebook link on the homepage for the latest news and coverage of previous events.

For Your Home

1. The twice-annual Chipping Program benefits participants by providing services to chip pruned biomass from your defensible space for free. Chipping reduces your risks. Approximately 120 homeowners/residents participated in 2023. Roadside banners will advertise the next event.
2. Free home advisory consultations are available to help residents learn how to reduce the risk of ignition near the home. On our website home page click the item PROGRAMS to request.

For Your Communities

1. A \$100,000 Fuel Reduction grant from PG&E to improve access on Portola State Park Road was requested, received, and completed. Volunteer time was provided by our Board to secure land owner permissions, and to select and supervise a contractor for 19 days of work.
2. A \$168,000 Fire Prevention grant from CalFire to reduce hazardous vegetation along Page Mill Road was requested and awarded! Work should begin in late 2024 after the necessary CEQA EIR (California Environmental Impact Report) is complete. Funding is through 2029.
3. In January 2024, work will begin on the Upper Page Mill Road Escape Route project. This \$40,000 project is managed by the Santa Clara County Fire Safe Council with participation from our Council, and the Los Altos Hills Fire Department. Our Council will contribute \$10,000 to this project funded completely by the grant awarded to our Council by the South Skyline Association. Thank you.

According to our By-laws, if you live in the area, and attend one or more meetings or events, you are automatically a General Member. General Members can become Active Members by volunteering for a project. Active Members can become Board Members. Please consider representing your community's interests on our Board.

Volunteering is a great way to get to know better your local community and support our mountain life.

South Skyline FireSafe Council

324 Skyline Blvd, La Honda, CA 94020
www.southskylinefiresafe.org

The Skyline Boulevard region in the counties of Santa Cruz, Santa Clara and San Mateo

Fetid Adder's Tongue is Well-Adapted to Winter

BY SARAH SCHOEN

Fetid adder's tongue (*Scoliopus bigelovii*) is unusual in part because it blooms in winter. You may need to don your rain slicker and mud boots to enjoy this one. Those who only look for wildflowers in the spring will miss out.

The perennial lily starts in winter as two, occasionally three large leaves, growing from short rhizomes and without a visible stem. Leaves are tear drop shaped, glossy green with parallel veins and brown to purple spots. The spots decrease the available surface area for photosynthesis, so they should have some mitigating advantage. One theory is that they discourage herbivory by mimicking a rotting leaf. A study in The Forest of Nisene Marks was inconclusive. Another theory is that the spots help to attract the flowers' pollinators, a gnat in the fly order Diptera. Flies are generally better able than bees and butterflies to tolerate the cold expected in winter.

There are 3 to 12 flowers per plant, and they are striking. A long flower stem (pedicel) emerges above the leaves. The flowers have 3 petal-like sepals, white with purple stripes. The 3 true petals above the sepals are purple, thin and upright, looking a bit like horns. They surround the ovary, which is topped with a 3-part stigma. The 3 stamens have anthers that turn from green to purple to gold when

they mature and release their pollen. The flowers bloom from late January to March.

The flowers have a fetid smell to attract their tiny pollinators, fungus gnats. Fetid means malodorous, stinking, smelly, rank, or foul. The smell is not detectable by most humans except by getting very close up, on the ground, nose almost touching the petals. If you are curious, it is interesting to experience it at least once.

Once pollinated, the sepals, petals, and stamens drop off, leaving the ovary and stigma still attached to the pedicel. The ovary matures into a pod, which is a capsule filled with seeds. As the pod matures the pedicel curves downward over the leaves, eventually to touch the ground. Another name for this plant is slinkpod and the genus name, *Scoliopus* is from the Greek for curved foot. Ripening from April to May, the pod then releases its seeds a short distance away from the parent plant.

The seeds can be further distributed by ants. The seeds contain a food packet, called an elaiosome, high in fats and protein. It is not involved in reproduction. After carrying the seeds away, often underground, the ants can eat the elaiosome. The seeds are still viable and are planted further away from the parent plant and away from potential seed predators.

Fetid adder's tongue can also reproduce vegetatively from 2 forked stolens (stems that grow along the soil surface), reminiscent of a snake's tongue. In nature, these plants often grow in colonies, either from seeds that are not carried away, or by vegetative reproduction.

Fetid adder's tongue grows in acidic soil, in cold, damp and shaded areas such as redwood forests and on cold, damp and curved slopes. It is found in the



Fetid Adder's Tongue, Parsons 1906

California coastal mountains from Humboldt to Santa Cruz County. Fetid adder's tongue was first discovered for western science in 1854 by botanist John Milton Bigelow on the slopes of Mt. Tamalpais. The plant's species name, *bigelovii* is in his honor.



Fetid Adder's Tongue with Slinking Pod on Right by David Schoen



Fetid Adder's Tongue by Lynn Gale

Leafless and Lovely: Winter Hiking in Monte Bello Preserve

BY JOANNE IRWIN

Monte Bello Open Space Preserve holds countless winter delights for hikers, mountain bikers and equestrians. If you're out on one of our crisp, sparkingly clear days, you'll catch long views to Mt. Diablo, the Bay, and Mt. Umunhum. If you summit Black Mountain, you can take in the sweeping vistas and valleys that form the Skyline ridgeline, and the glimmering Pacific beyond. On a breezy day you might spy a Cooper's Hawk, Red-shouldered or Red-tailed Hawk in flight. On a drippy day you'll likely notice Witch's Butter, Lion's-mane, Artist's Conk and a cadre of other unusually shaped mushrooms. The leafless silver-grey branches of Buckeye, Valley Oak and Walnut stand like silent, reverent worshipers, their arms raised to heaven. Meanwhile, the evergreen canopy of Bay, Madrone, and Live Oak provide cover for winter birds, coyote, black-tailed deer, and emerging mushrooms.

Starting from the Monte Bello's main parking lot at 4301 Page Mill Rd. you can select a mild, moderate or challenging path.

Easy: Hikers, equestrians and novice mountain bikers can enjoy the gently rolling terrain of a 2.8 mile out and back route to Lori's Pond. Head west on the White Oak Trail, after a half mile stay right (do not descend into the valley on White Oak), then turn left/south when you approach Page Mill Road. Lori's Pond, a rewarding spot for bird watchers, is downhill 3/10 of a mile further.

Moderate: Experienced mountain bikers, hikers, and equestrians can enjoy a 3.7 mile loop that descends into Stevens Creek Canyon via the White Oak Trail. After your meandering descent, at the two-mile point, turn left/east on the Skid Road Trail. Continue .6 miles to Canyon Trail. Turn left/north and climb uphill

on the partially shaded route. At times the canopy of oaks overhead feels like a tunnel of trees. On your way up you will find three benches: one halfway up Canyon Trail facing west, another at the sag pond, facing south west, and the last, with the best view of all, looks south, overlooking Stevens Creek Canyon and Mount Umunhum in the far distance.

Cyclists and equestrians will need to take a side trip on foot to take in the view from this bench, as it is on a "hikers only" portion of the trail. Note: while traversing the Canyon Trail hikers, bikers and equestrians should watch for a smaller side trail on your left, just past the sag pond; if you remain on the wide trail you'll wind up crossing Page Mill Road and entering the neighboring reserve, Los Trancos Open Space. Once on the single-track trail, those riding bikes or horses will stay right at the next intersection, hikers can turn left. While cyclists and equestrians may miss the final bench with the canyon view, their route offers long views of the Bay and Mt. Diablo.

Hikers only can alter this moderate loop hike by ascending out of the canyon via Steven's Creek Nature Trail, the first trail intersection after turning left on Skid Road Trail. Both Steven's Creek Nature Trail and the Canyon Trail lead to the well-placed bench with the grand view.

Challenging: Equestrians hikers and experienced mountain bikers who wish to enjoy the 360 views from Black Mountain can take the Canyon Trail to Bella Vista (.3 miles) then Bella Vista to Old Ranch (.8 miles, uphill). At Old Ranch, stay right on either the single track Old Ranch Trail, or the graveled Montebello Road. In 1.2 miles you'll be on top of the rocky summit. Note: there are several side trails, but it is not difficult to figure out which way to the top. Do not turn



west (downhill) on Indian Creek Trail until after you've enjoyed your time atop Black Mountain.

From the park's highest point (elevation 2786) you can return the way you came (roughly 5 miles round trip), or create a loop route via Indian Creek and Canyon Trails (roughly 5.3 miles). Indian Creek Trail descends 800 feet, traveling through the heart of the preserve. Grassy slopes peppered with noble solitary oaks eventually give way to the lush Bay, Madrone and Oak woodland of Steven's Creek Canyon. The wide trail is steep in places, and provides numerous long views of the forests and ridgelines in the preserve and beyond. The long, lovely descent requires you climb back up 1.3 miles via the Canyon Trail to return to your vehicle. The three benches mentioned in the moderate hike described above are well-positioned to provide rest along your way.

No matter if you explore Monte Bello Preserve on horseback, mountain bike, or foot, the striking beauty of its leafless shrubs and trees offers a gentle reminder that winter rest is foundational to the coming flourishing of spring. Until spring's wildflowers arrive again on Monte Bello's grassy slopes, visitors can admire winter treasures like the bronze "horse chestnuts" that have fallen from the naked branches of the California Buckeye, or the bright red berries ornamenting the madrone trees.

SOUTH SKYLINE ASSOCIATION MEMBERSHIP APPLICATION AND RENEWAL FORM

APPLICATION TO: JOIN _____ RENEWAL _____ (please check one)

Contact Information

Name(s)	
Mailing Address	
City ST ZIP Code	
Physical Address	
City ST Zip Code	
Phone(s) (required)	
E-Mail Address(es) (required)	

Propane Supplier

To participate in the SPUG program indicate your current or preferred participating propane provider. After receipt of your application and payment, we contact the provider directly to inform them of your membership status.

Amerigas Kamps
 FerrellGas Suburban Scotts Valley

Volunteer Interests

SSA always needs additional volunteers. Please tell us in which areas you may be interested in volunteering.

Board Member Skyline Propane User Group (SPUG) Committee
 Events Planning and Setup Membership Committee
 Website Committee Grants Program
 Skylines Newsletter Other

Special Skills or Qualifications

Summarize special skills and qualifications which you feel may be useful to our association.

Our Policies

All contact information is kept confidential. Dues are payable in January of each year and are not prorated if paid later in the year. Members must be at least 18 years of age to participate. Anyone is eligible to join regardless of property address. Members who live within the SSA boundaries are considered "regular members" and are eligible to serve on the Board, vote at general meetings, and receive hard copies of *Skylines*. All members receive an electronic copy *Skylines* newsletter. If your property is outside the SSA boundaries, you must confirm with your propane provider prior to joining they will honor the SSA SPUG rate. Outside boundary members receive an electronic copy of the newsletter and all notifications. You can also join online at southskyline.org.

Signature _____ Date: _____

Enclose this application with your \$20.00 check payable to "South Skyline Association" and mail to:

SSA MEMBERSHIP
P.O. Box 400
La Honda, CA 94020

Classified Ads

Community

FREE FIRE FITTING FOR THOSE IN THE SOUTH SKYLINE FIRE & RESCUE PRIMARY RESPONSE AREA.

This 2 ½ inch fitting will allow the connection of a fire hose to your water supply and can be utilized by the fire department to access the water necessary for fire suppression. Blue reflectors are also available. Please visit <http://southskylinefire.org/> for more information in the "Help us help you" section.

SC4 AMATEUR RADIO CLUB welcomes those interested in amateur radio for emergency communications and neighborly talk. License is free. Simple exam: No Morse code. We offer classes. Visit www.sc4arc.org or write: SC4ARC, PO Box 237, La Honda, CA 94020

Service

BARBARA & JOHN HARRIMAN MOUNTAIN REALTORS

Residents here for 23 years.

We LOVE the mountains!

John 408-332-4780

Barbara 408-656-8209

You set the pace. We make it easy.

Now with Sereno Group

John.Harriman@serenogroup.com

Barbara.Harriman@serenogroup.com

Check out our Testimonials

www.TheHarrimanTeam.com

COLE AND RIESE REAL ESTATE GROUP

#1 TEAM LOS GATOS ~

2019 SALES OF \$84 MILLION

Nancy Cole, Jill Cole and Michael Riese.

Contact us today to understand how to maximize the sale price of your home.

Visit us online at www.Cole-Riese.com

info@cole-riese.com | 408-219-3416

C.STILLE EXCAVATION

On the mountain serving South Skyline

Blvd / Summit Rd areas for over 30 years.

We offer Quarry Supply, Hauling, Paving and most forms of Excavation including defensible space for fire and slide debris removal. You can reach us at

408-781-2731 or get more info through:

www.ifyoucandreamitwecandigit.com

DAVE WARTER MORTGAGE ADVISOR

831-419-7604 bayareamortgages.com

I am passionate about creating a better loan process, serving happy clients, and building a foundation for financial success. This allows me to provide my clients with competitive rates, tailored financing solutions, and an efficient loan process focused on communication. Call or email me for a free consultation.

dave@bayareamortgages.com

DOG DAYS—AWARD WINNING DOG TRAINING SINCE 1995

Private In-Home Lessons, Virtual Lessons and Group Classes—starting soon

For Friendly Puppies and Beginner Dogs!

GIFT CERTIFICATES—great for any dog owner!

Please call 650 851-5500 anytime

(Best) or Email: Dog.days@comcast.net

HOME REPAIRS & PAINTING

SERVICES: I do fences, retaining walls, roof repairs, carpentry, painting, and general ranch handyman work. I'm insured and have local references. I live on Skyline

Blvd near Saratoga Gap. Luis Pinheiro,

Louisp497@gmail.com (best); cell:

408-691-2907 Lic # 19113711

HUNNER ASSOCIATES GENERAL

CONTRACTORS Local family owned

and operated general construction and

project management firm specializing

in new and remodel residential projects

in the San Francisco Mid-Peninsula

area. Licensed since 1979, visit our

website to learn more:

www.hunnerassociates.com or connect

by email: info@hunnerassociates.com

PINEDA TREE SERVICE INC.

A local and reliable business that

specializes in Crown thinning & cleaning,

Hazardous tree removal, poison oak

removal, and property cleanup, 24/7

emergency. Free estimate. Insured and

bonded. CSL#991767 650-208-2734

Email: Pinedatreeserviceinc@gmail.com

RESIDENTIAL DESIGN: Country and

urban custom houses, remodel and

additions. 20+ years experience in

California. See some of my work at:

<http://www.TSVresidential.com>

Taruno S. Vega 650-747-0654

taruno@coastside.net

RUSSIAN RIDGE WINERY

919 Washington St., San Carlos. Award winning wines, many Santa Cruz Mountain varietals. Tasting room open Fridays 5-9 pm and Saturdays/Sundays 12-5 pm.

SOLAR CONSULTATION

For a free, no obligation solar consultation from your mountain neighbor, please contact David Morgan dmorgan@simplysolarcalifornia.com (408) 348-5781. Simply Solar is a local Northern California company installing North American made panels.

SKYLINE BROADBAND SERVICE

Offering high-speed wireless Internet with speeds up to 50 Mbps in much of our 500-square-mile coverage area.

<http://SkylineBroadbandService.com>

phone: 650-712-5900

SKYLINE FIRE CLEARANCE TREE SERVICE

Tree Trimming, Weed Whacking, Brush Clearance, Land Maintenance.

Insured. Bonded. Licensed: 1099726

Friendly mountain local, living and

working in Las Cumbres, offering fire

clearance and tree services to South

Skyline neighbors.

Check us out: skylinefireclearance.com

Email: info@skylinefireclearance.com

Call: 831.515.6010

SKYLINE YOGA Want healthier muscles,

joints and bones? Want to manage

osteoporosis, arthritis and back pain?

Join us for Live Online Aging with Grace

Yoga and Chair Yoga for Seniors. Classes

are recorded in case you can't make it live.

Learn More at www.yourhealthandjoy.com

These ads can also be used to list items for sale or items for free

When placing an ad: Please limit each ad to 45 words. Due to many requests, we will attempt to keep a list of ads that will run every issue. However, there is no guarantee that an ad won't be missed because of our changes in staff. If you want to be on the list, make a request to "run until canceled." It is best to resubmit ads for each issue. **Next deadline: March 10, 2024.**

Classified Ads are free for SSA members. Membership is \$20 per year. The online SSA membership application is at www.southskyline.org. Email ads to: skylineseditor@yahoo.com

**SSA Calendar 2024
Monthly SSA
Board Meetings
7:00pm**

**February 8
March 14
April 11**

For further updates
contact Evan Dellor:
president@southskyline.org

Current SSA Board Members

Dave Anderson	Highway 9 – Santa Cruz County	Webmaster, Public Safety
Patti Begley	Highway 9 – Santa Cruz County	Skylines Editor, Website Committee
Barbara Bekins	Highway 35 – Rocky Creek	Treasurer, Public Safety/Water, Website Committee
Debra Born	Alpine Road	Secretary, Membership Chair, SSFC, Website Committee
Evan Dellor	Portola Heights	President
Udy Gold	Portola Heights	
Rich Lee	Portola Heights	Vice-President, SSEPO, Chief Fun Officer
Julie Snyder	Skylonda	
Susan Stucky	Portola Heights	Grant Administrator
Ann Waldhauer	Portola Heights	

Board positions are available.

Contact Evan Dellor – president@southskyline.org

Skylines Ads and News Articles

The deadline for submitting ads and articles for the next issue is **March 10, 2024**

Skylines is published once a quarter: January/April/July/October

Skylines invites individuals to submit articles and artwork.

Policy on Classified Ads: Limit ads to 45 words. Free for SSA members.

Send all ads and articles to: SkylinesEditor@yahoo.com

We reserve the right to edit all submissions. We assume no responsibility for omissions, incorrect information or personal opinions.